



# A study on general health status and potential disease risks in grey wolf (*Canis lupus*) of Slovenia

Diana Žele, Gorazd Vengušt

University of Ljubljana, Veterinary Faculty,

Institute for Breeding and Health Care of Wild

Animals, Fish and Bees

## Examined animals 2010-2013: 35

<b>COD*</b>	<b>F</b>	<b>M</b>
harvest	13	17
car collision	2	1
other causes	1	1

\*COD- cause of death

## General health status

- Pathoanatomy
- Pathohistology
- Parasitology
- Bacteriology
- Virology
- RTG



Results:  
Parasitic diseases: 35



*Toxocara canis*



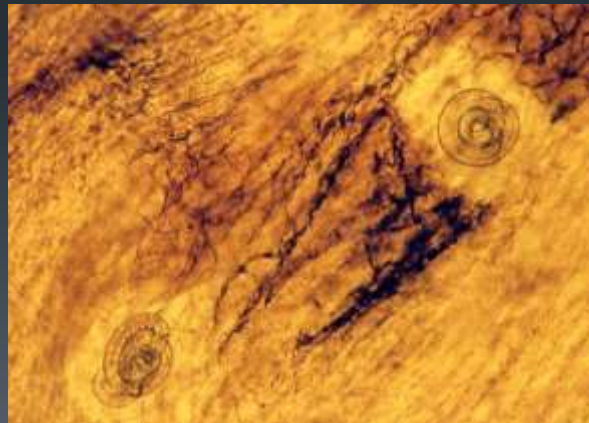
*Uncinaria stenocephala*



*Oslerus osleri*



*Taenia* spp.



*Trichinella* spp.

Results:  
Diseases of skin: 4



Results:

Inflammatory diseases: 2

Trauma: 5



Results:

Zoonoses: 4



*Trichinella* spp.



Rabies virus



*Thank you!*