



Univerza v Ljubljani



SLOVENIA FOREST
SERVICE



Wolf damages in Slovenia

Rok Černe, Rok Pisek, Irena Kavčič, Marko
Jonozovič, Klemen Jerina

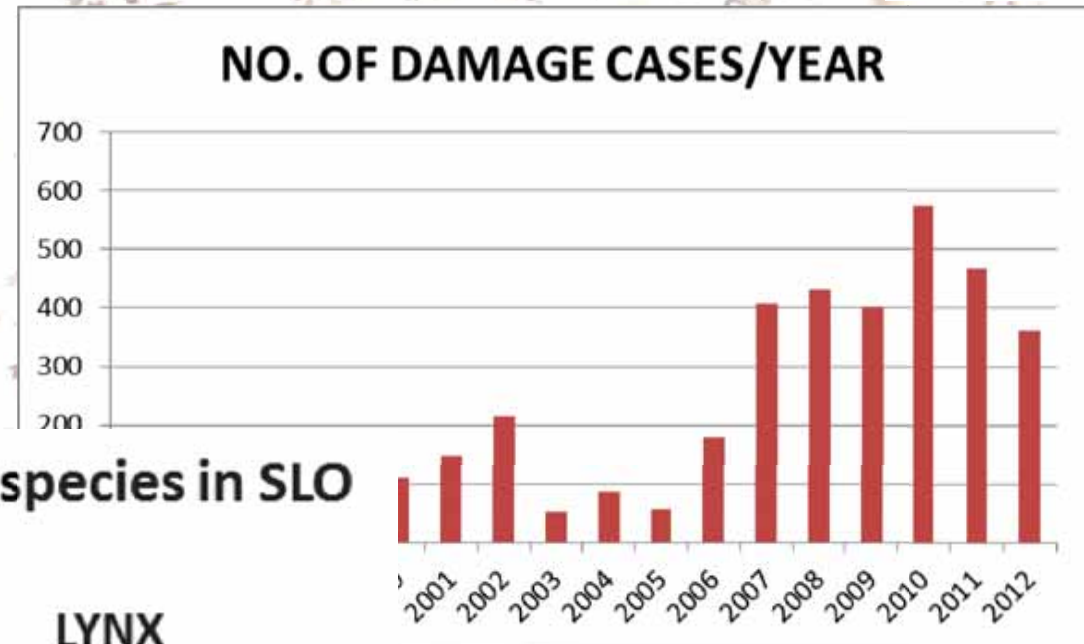


SLOWOLF
WWW.VOLKOVI.SI

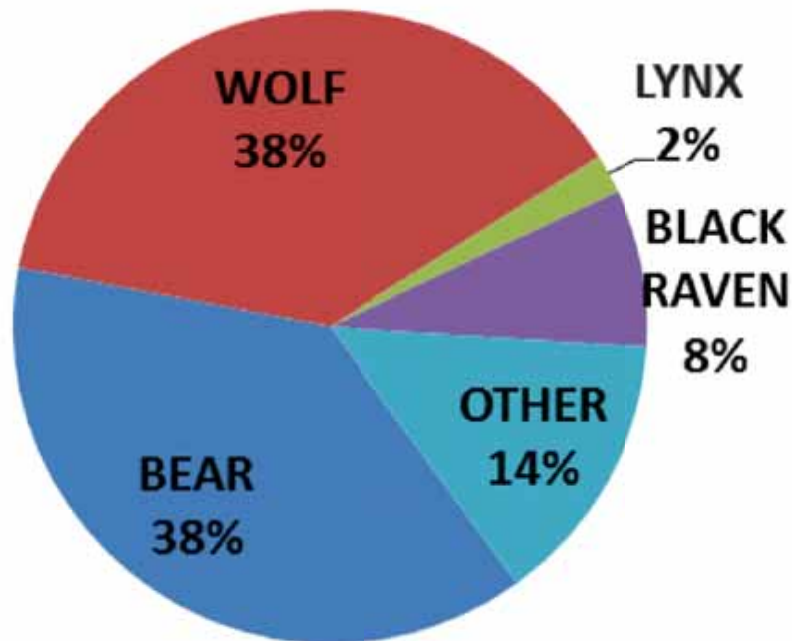
Wolf damage cases in SLO



➤ Damages are compensated by the state

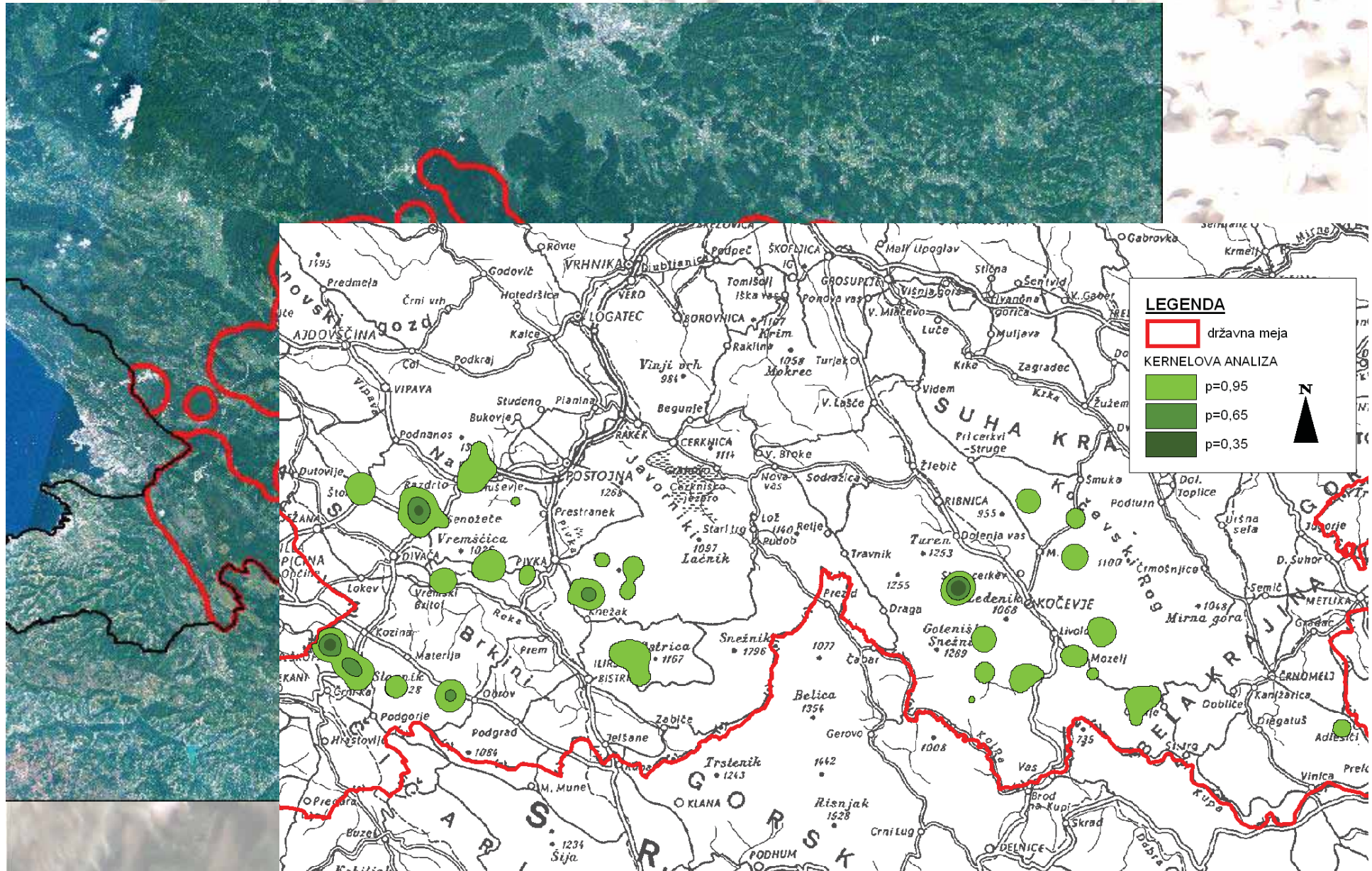


Assessed damages - protected species in SLO



Data SFS 1994 – 2011

Area of damage cases occurrence



Solutions



➤ **Culling**

➤ **Fencing**

➤

COM

N BE

➤

➤

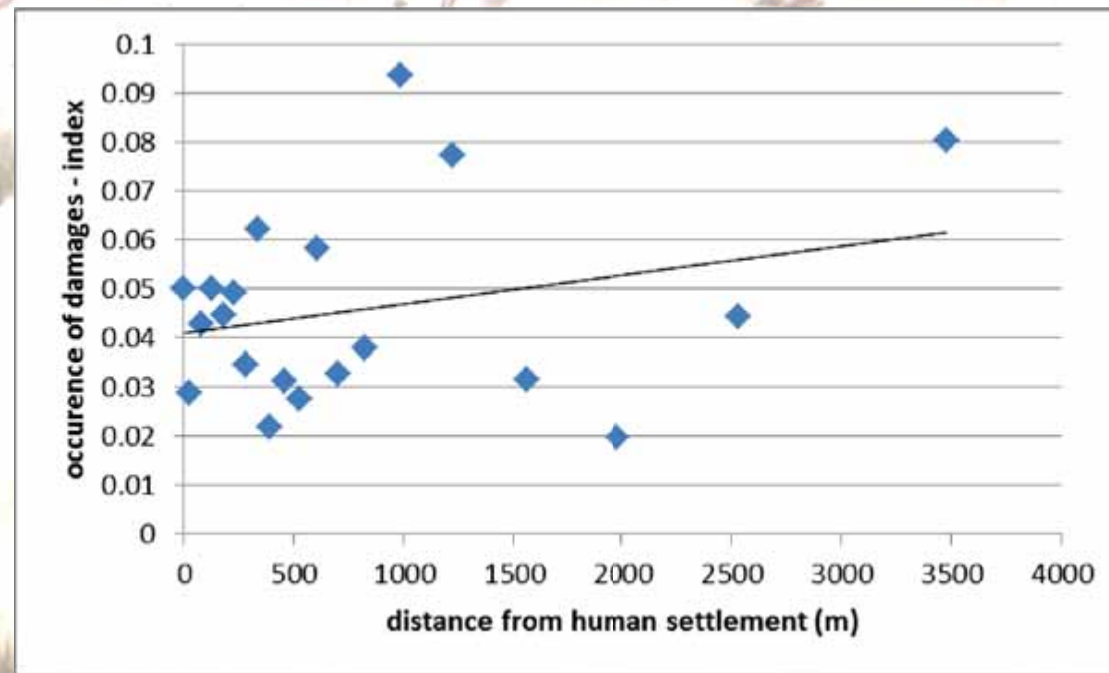
➤





Spatial patterns - nonsignificant

- Distance from forests and forest masives
- Distance from human settlements (partly significant)



Data were prepared in GIS (quadrants 100x100m) and tested with logistic regression...

Spatial patterns - significant



- No. of sheep in the area
- Larger flocks are more vulnerable
- Density of wild ungulates (more ungulates more damages)



Test of differences among breeders (Muhič 2013)



- 36 breeders chosen; 1/2 with many damages; 1/2 with little or no damages
- We tested the effect of: type, height and maintenance of fence, strength of electric current in the fences, presence of dogs



Results were tested with Analysis of variance (ANOVA), Kruskal-Wallis test, χ^2 test, Pearson's correlation coefficient

Test of differences among breeders (Muhič 2013)



- Little or no influence of chosen parameters on damage cases occurrence
- Not even electric fences with 5 wires and electric nets (around 1m height) seem to be effective
- Against our results from other projects



WHAT IS GOING ON?

SloWolf and SFS donation of 170cm high electric fences



BREEDER	YEAR AND MONTH OF DONATION	NO. OF DAMAGE CASES				NO. OF DAMAGE CASES AFTER INSTALATION OF 170cm HIGH ELECTROFENCES	AVERAGE YEARLY DAMAGES BEFORE INSTALATION OF 170cm ELECTROFENCES
		2009	2010	2011	2012		
1	May 2011	8	8	1	0	0	1.555
2	May 2011	5	11	0*	0	0*	1.687
3	May 2011	4	11	0	1**	**	4.435
4	May 2011	68	114	39**	30**	**	84.263
5	June 2011	14	5	2	0	0	3.629
6	May 2012	3	3	12	0	0	6.430
7	May 2012	0	1	1	0	0	1.412
8	May 2012	1	1	9	0	0	4.119

Monitoring of the pasture



- 2 months of video observation
- Personal observations and control of the fences





LESSONS LEARNED

- Only proper use of the electric fences provide proper protection
- Active work with people
- Inspection
- Culling?





SLOVENIA FOREST
SERVICE

THANK YOU

QUESTIONS WELCOMED



SLOWOLF
WWW.VOLKOVI.SI

www.volkovi.si